



UNIVERSITY OF
BIRMINGHAM

RESEARCH
SOFTWARE GROUP

EasyBuild Workshop

Spin-off from the HPC-SIG

Birmingham 22 October 2018



EasyBuild Workshop

- 10:00 - Tea/coffee
- 10:15 - EasyBuild introduction/history
- 11:00 - How it's done at Sussex
- 11:15 - How it's done at Birmingham
- 11:30 - Questions/discussion
 - <http://sli.do/> : HPC-SIG-EASYBUILD
- 12:30 - Lunch
- 13:00 - Contributing back to the community
- 14:00 - Workshop time
- (14:30 - Tea/coffee)
- 16:00 - Close



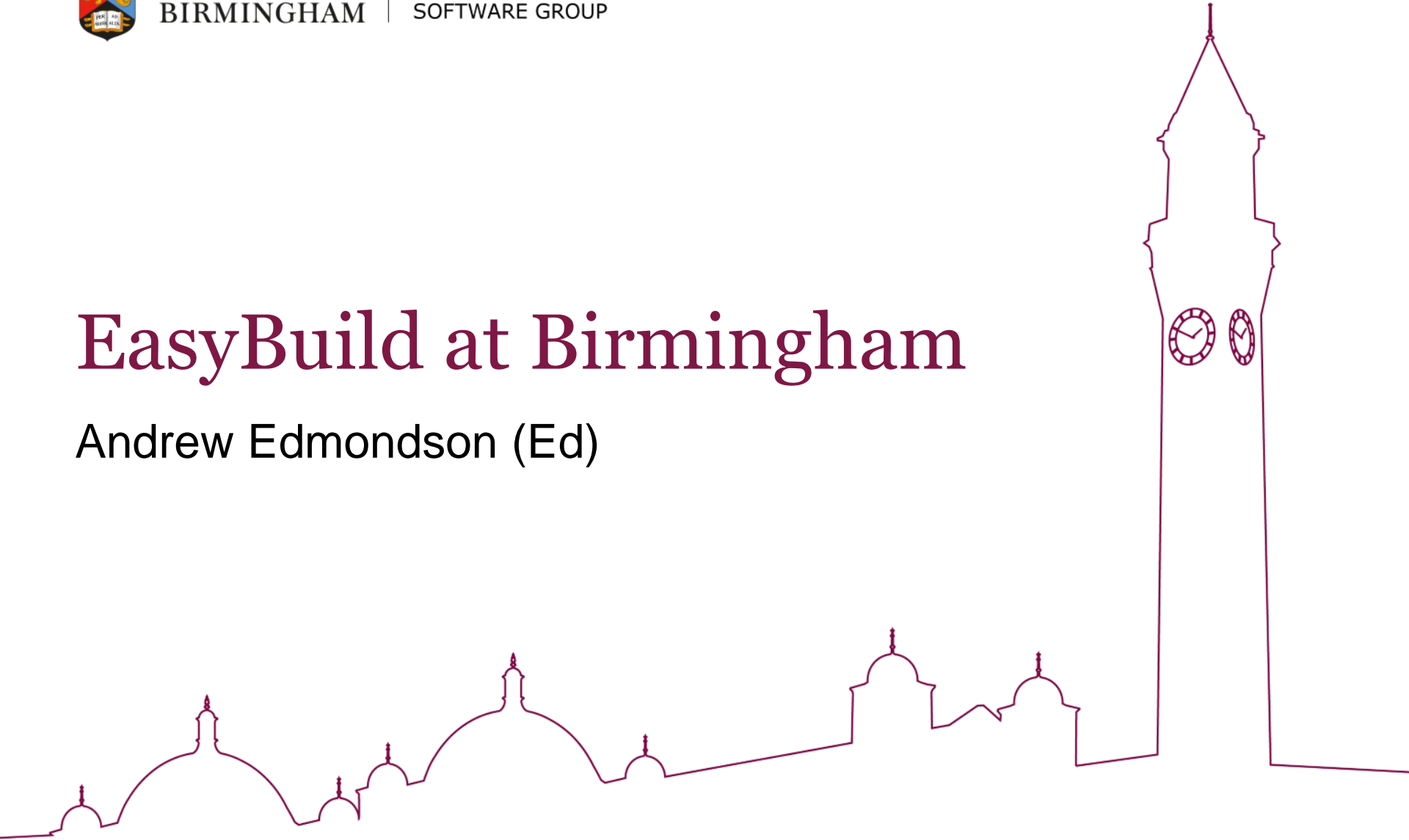


UNIVERSITY OF
BIRMINGHAM

RESEARCH
SOFTWARE GROUP

EasyBuild at Birmingham

Andrew Edmondson (Ed)



Background

2011 – BlueBEAR 2

EL6 sandybridge

Hand-built applications



UNIVERSITY OF
BIRMINGHAM

RESEARCH
SOFTWARE GROUP

Background

2016 – BlueBEAR 3

EL6 sandybridge

EL7 haswell

Hand-built applications

EasyBuild for new applications

Made our own toolchains:

foss-2016.10, iomkl 2016.09 (bad idea)



UNIVERSITY OF
BIRMINGHAM

RESEARCH
SOFTWARE GROUP

Background

2017 – BlueBEAR, BEAR Cloud

EL6 sandybridge

EL7 sandybridge

EL7 haswell

Ubuntu 16.04 haswell

Hand-built applications

EasyBuild for new applications

Still using our own toolchains:

foss-2016.10, iomkl 2016.09 and 2017.01



UNIVERSITY OF
BIRMINGHAM

RESEARCH
SOFTWARE GROUP

Background

2018 – BlueBEAR, BEAR Cloud

EL7 sandybridge

EL7 haswell

Ubuntu 16.04 haswell

EL7 haswell (No InfiniBand)

EasyBuild for nearly all applications

Using (and contributing to) upstream 2018a toolchains

Made proper dev environments



UNIVERSITY OF
BIRMINGHAM

RESEARCH
SOFTWARE GROUP

Background

2018/2019 – BlueBEAR, BEAR Cloud

~300 applications so far

EL7 sandybridge

EL7 haswell

Ubuntu 16.04 haswell (**18.04 coming**)

EL7 haswell (No InfiniBand)

EL7 power9

EasyBuild for nearly all applications – 2018b toolchains

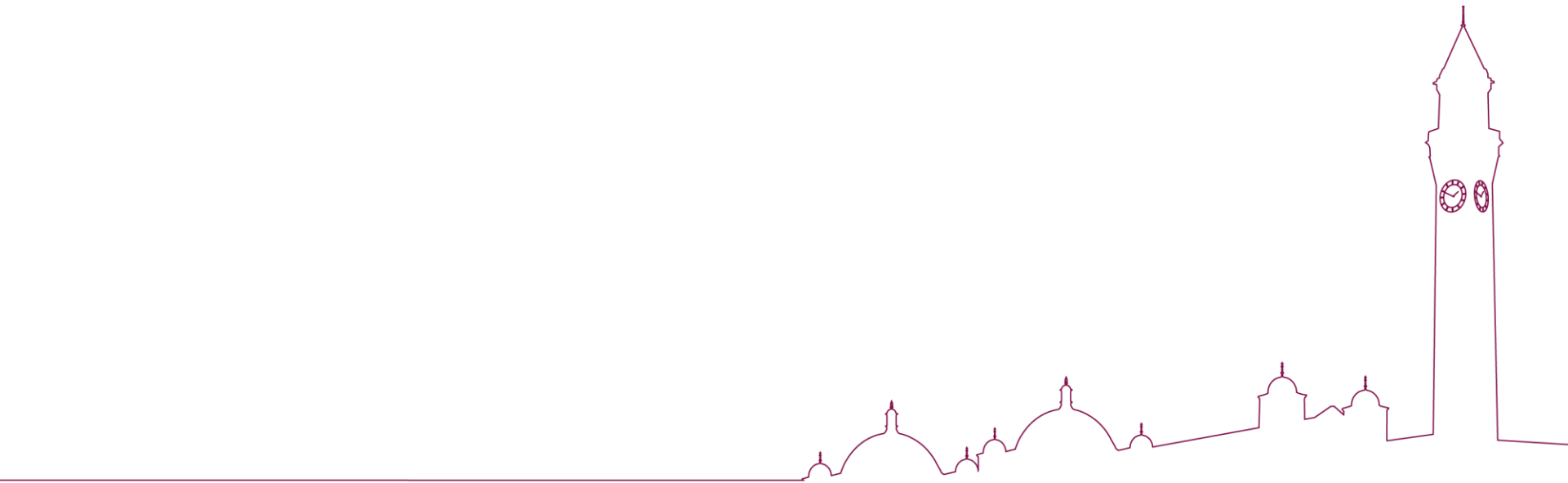
GitLab CI

Easier to contribute upstream



UNIVERSITY OF
BIRMINGHAM

RESEARCH
SOFTWARE GROUP



EasyBuild Workshop

- 10:00 - Tea/coffee
- 10:15 - EasyBuild introduction/history
- 11:00 - How it's done at Sussex
- 11:15 - How it's done at Birmingham
- 11:30 - Questions/discussion
 - <http://sli.do/> : HPC-SIG-EASYBUILD
- 12:30 - Lunch
- 13:00 - Contributing back to the community
- 14:00 - Workshop time
- (14:30 - Tea/coffee)
- 16:00 - Close

